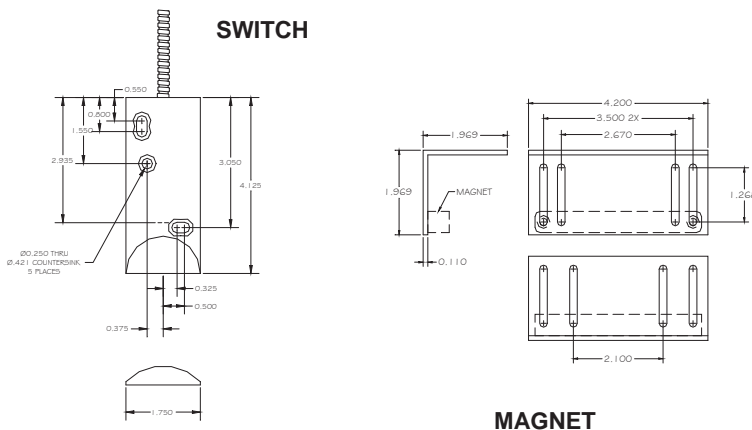


# OVERHEAD DOOR DPST BALANCED MAGNETIC SWITCH 1000-98LV BMS



## FEATURES:

- \* Overhead Door Floor Switch and Magnet
- \* 18" Armored Cable, #22 AWG Wire Leads
- \* Universal Footprint
- \* Balanced Magnetic Configuration with Magnetic Tamper
- \* Solid Aluminum Case
- \* Lifetime Warranty
- \* Safety Approvals



## SPECIFICATIONS

### ELECTRICAL:

Circuit: DPST with Magnetic Tamper  
Voltage: 100VDC Max.  
Current: 50ma. Max.  
Wattage: 10 Max.

### MECHANICAL:

Gap Housing: 1 1/2" TO 2"  
Solid Aluminum Construction

**PRINCIPAL OF OPERATION:** The Flair 1000-98LV BMS Balanced Magnetic Contact utilizes three high reliability Rhodium plated reed switches, one of the three reed switches being of different sensitivity, encapsulated in epoxy inside a solid aluminum case. This results in DPST configuration with magnetic tamper. When the rare earth magnet is in place and properly adjusted (balanced), the magnetic tamper switch will be in a state opposite to the other two switches. This normal configuration will change should one of the following occur; (1) switches 1 and 3 will

change state by either the deliberate shunting of the magnetic field or if the door/window is opened, and (2) the addition of a magnetic field such as an external magnet will cause the magnetic tamper switch 2 to change state.

End-of-line resistors may be used to allow a pre-determined trickle of current to flow and permit operation from a supervised line at all times. Call Flair to request help with specifying the correct resistors. See Installation Instructions for more information.

## WIRE COLOR CODE BASED ON LOOP TYPE WHEN MAGNET IS PRESENT

	Common	Closed	Open
Loop	Switch 1	Green	Red
	Switch 2 Magnetic Tamper	Black/White	Blue/White
	Switch 3	Gray	Yellow