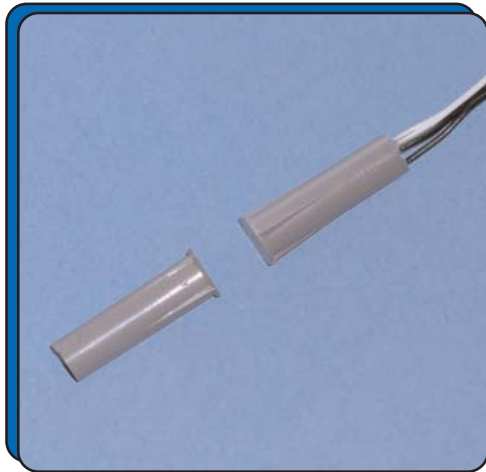


**RECESSED 3/8" DIA.
MAGNETIC CONTACT
RMS94 SERIES**

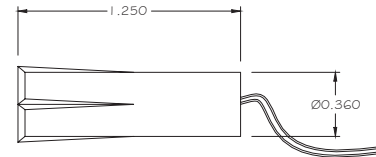
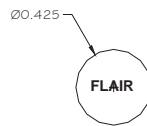


FEATURES:

- * 3/8" Dia. Recessed Magnetic Contact
- * 12" #22 AWG Wire Leads
- * Rare Earth Magnet
- * Self Locking in Wood
- * E.O.L. Resistors, Diodes and Supervisory Loops Available
- * Contacts and Magnets Available Separately
- * Colors: White, Brown, Black and Gray
- * Lifetime Warranty
- * Safety Approvals

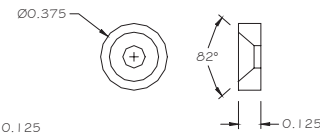
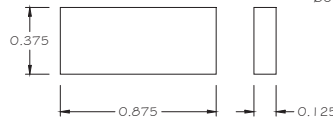
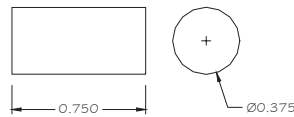


MAGNET



SWITCH

**ALTERNATE
RARE EARTH
MAGNETS**



Part Number	Loop Type	Electrical Configuration	Gap (Inch / mm)	Maximum Initial Contact Resistance (Ohm)	Maximum Contact Rating (W)	Maximum Switching Voltage (VDC/VAC)	Maximum Switching Current (A)
RMS94	Closed	N/O	3/4 (19.1)	.100	10	100	.500
RMS94W	Closed	N/O	1 1/4 (31.8)	.100	10	100	.500
RMS93	Open	N/C	1/2 (13)	.100	3	30	.200
RMS93W	Open	N/C	3/4 (19.1)	.100	3	30	.200
RMS95	Open/Closed	SPDT	1/2 (13)	.100	3	30	.200
RMS95W	Open/Closed	SPDT	3/4 (19.1)	.100	3	30	.200
RMS94Y	2X Closed	DPST	3/4 (19.1)	.100	10	100	.500
RMS94WY	2X Closed	DPST	1 1/4 (31.8)	.100	10	100	.500
RMS95Y	2X O/C	DPDT	3/4 (19.1)	.100	3	30	.200
RMS95WY	2x O/C	DPDT	1 1/4 (31.8)	.100	3	30	.200