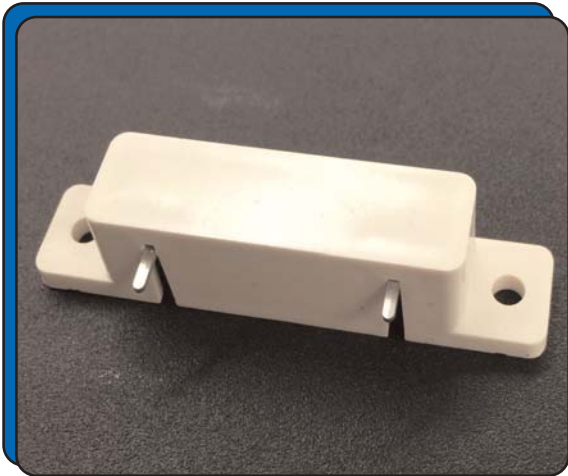


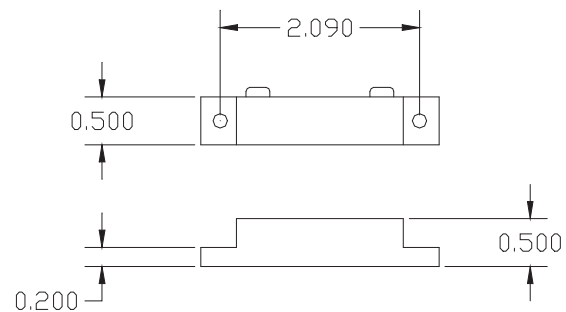
**2 1/2" LONG SURFACE MOUNT
WATER SENSOR PROBE
1020-H2O**



FEATURES:

- * 2 1/2" Long Screw Mount Probe
- * Hidden Terminals
- * Epoxy sealed for maximum resistance to harsh environment
- * Color: White
- * Lifetime Warranty

WATER SENSOR PROBE



INSTRUCTIONS:

1. The 1020-H2O is a water sensor that connects to a smart control panel that can detect the presence of water when the water bridges across the two protruding probes.
2. There is no polarity so the wires can be connected to either terminal located under the case.
3. Multiple water sensor probes may be connected on the same two wires in parallel.
4. The 1020-H2O is best mounted on the base board or wall just above the floor using two screws.
5. Do not leave the water sensor probes connected to the control panel and submerged in water for prolonged periods of time or electrolysis may occur.

***DETECT FLOODING ROOMS OR LEAKY EQUIPMENT USING
FLAIR WATER SENSOR PROBES***